

# Synchronized Network Analytics and Real-Time Performance Optimization

Charles Barry  
CTO  
charles@jolata.com  
June 2014

## **Network traffic\* and speeds**

- 2013 Global mobile data traffic growth 81% (1.5 Exabytes/mo); Video > 50%
- 2013 – 2018 CAGR = 61% (15.9 Exabytes/mo)
- 4G devices generate 14.5 x traffic of non-4G devices
- 1 GbE → 10GbE → 40GbE → 100GbE → ...

## **Transition to all-IP networks is nearly complete**

- Fixed and mobile (LTE; LTE advanced)

## **Increasing challenges to deliver a good customer experience**

- Network timing of asynchronous IP networks gets more complex with technology roadmap, i.e, LTE, LTE-Advanced, VoLTE

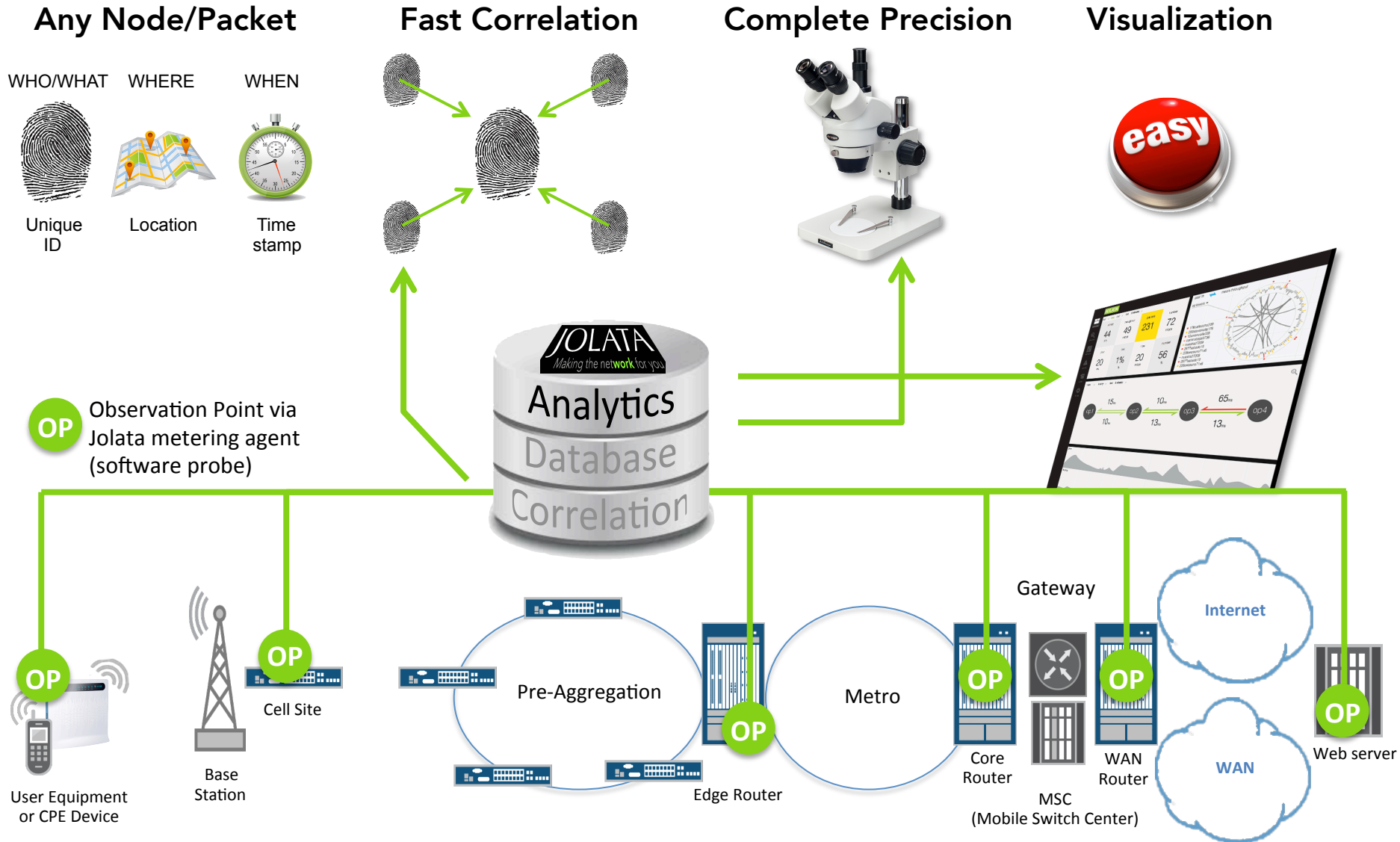
## **Software Defined Networks (SDN) and Network Functions Virtualization (NFV)**

\*Source: Cisco VNI

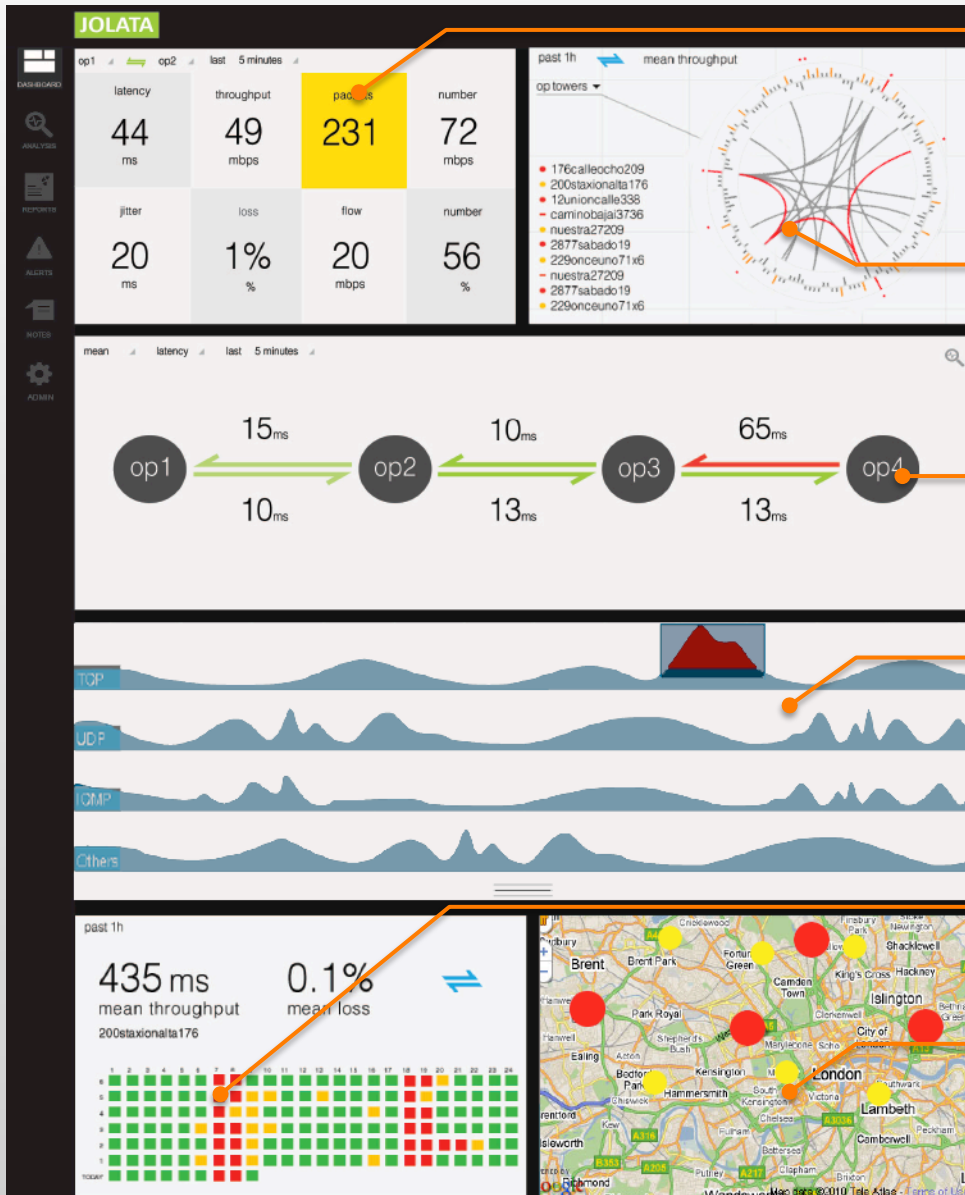
- **Synchronized Network Performance Measures**
  - Network Optimization & Orchestration Systems
- **Differentiate and Monetize customer experience**
  - New category of high margin revenue services (low latency)
  - Infrastructure sharing among operators
- **Enable reduced TCO**
  - Identify performance areas in real-time to minimize Root Cause Analysis (RCA) times
  - Evaluate HW/SW/NW architectures in lab or in situ to “right-size” the network

- **Synchronized Precision:**
  - Measure live network traffic with **microsecond accuracy**
  - Correlate at **millisecond intervals**
- **Real-Time:**
  - Analyze and visualize results **within seconds**
- **Scale:**
  - Monitor up to **every packet, every flow, and any location** on a global network

# How Jolata Works: Detail



# What A User Sees



## Metrics Cards View:

- Latency
- Jitter
- Loss
- Throughput
- # of Packets
- # of Flows
- Fragmentation
- Link level throughput

## Chord View

- Simultaneously see >100 observations points, specific network flows
- Observe over- and under-utilized network segments

## Spatial Map View

- Drag/drop Ops to create specific flow views
- See upstream/downstream, hop-by-hop

## Temporal View

- Drill down into specific issues in real-time, and with sub-second precision
- Scrolling, continuous read-out

## Heat Map View

- See 7/24 trends in network performance

## Geo View

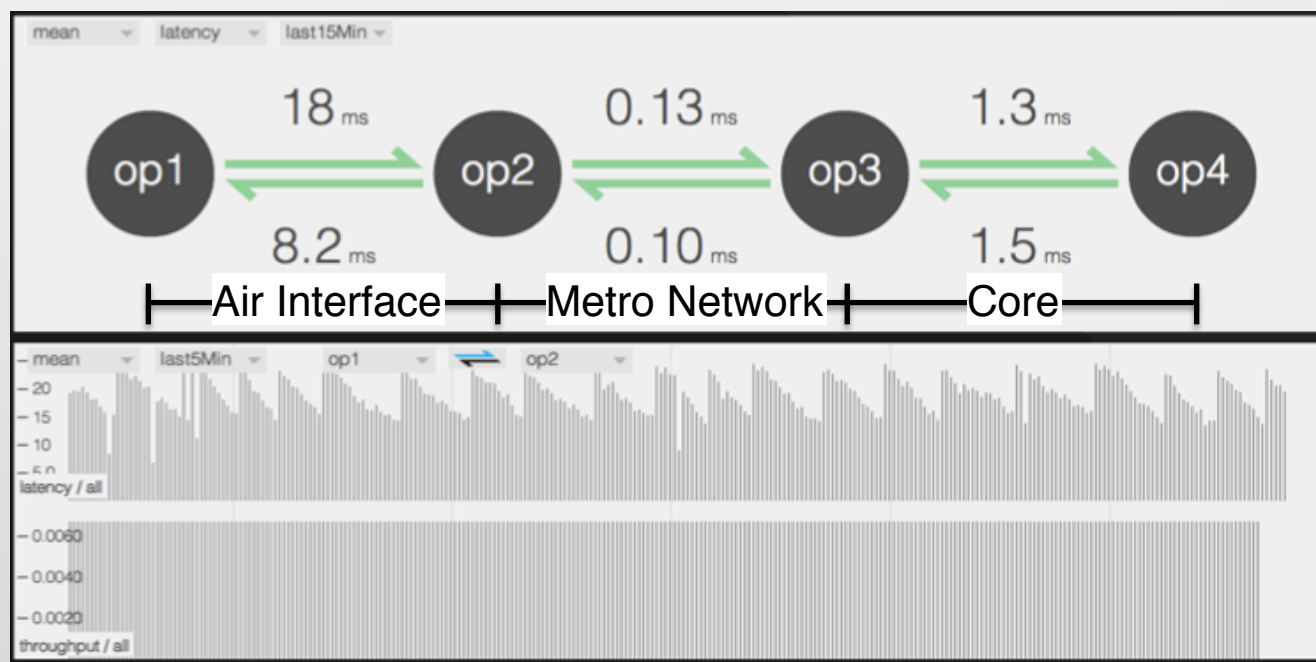
- See critical issue where they are physically located in a geography

# Chord View (Logical Flows)

- See hundreds of nodes at one time
- See multiple flows, or view custom flows
- See over-utilized, and under-utilized nodes/links



# End-To-End LTE – Light Load, Averaged Data



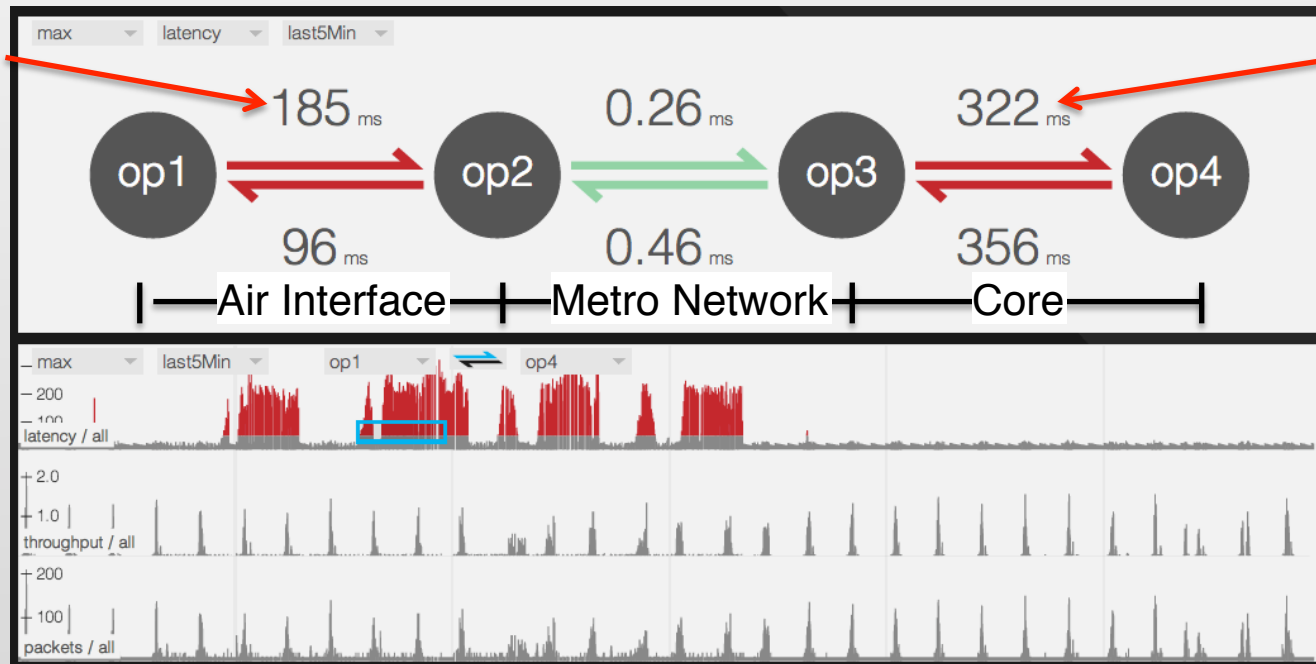
No Latency Alerts When Statistics are Averaged...



# End-To-End LTE – The Value of Precise Resolution **JOLATA** Making the network for you

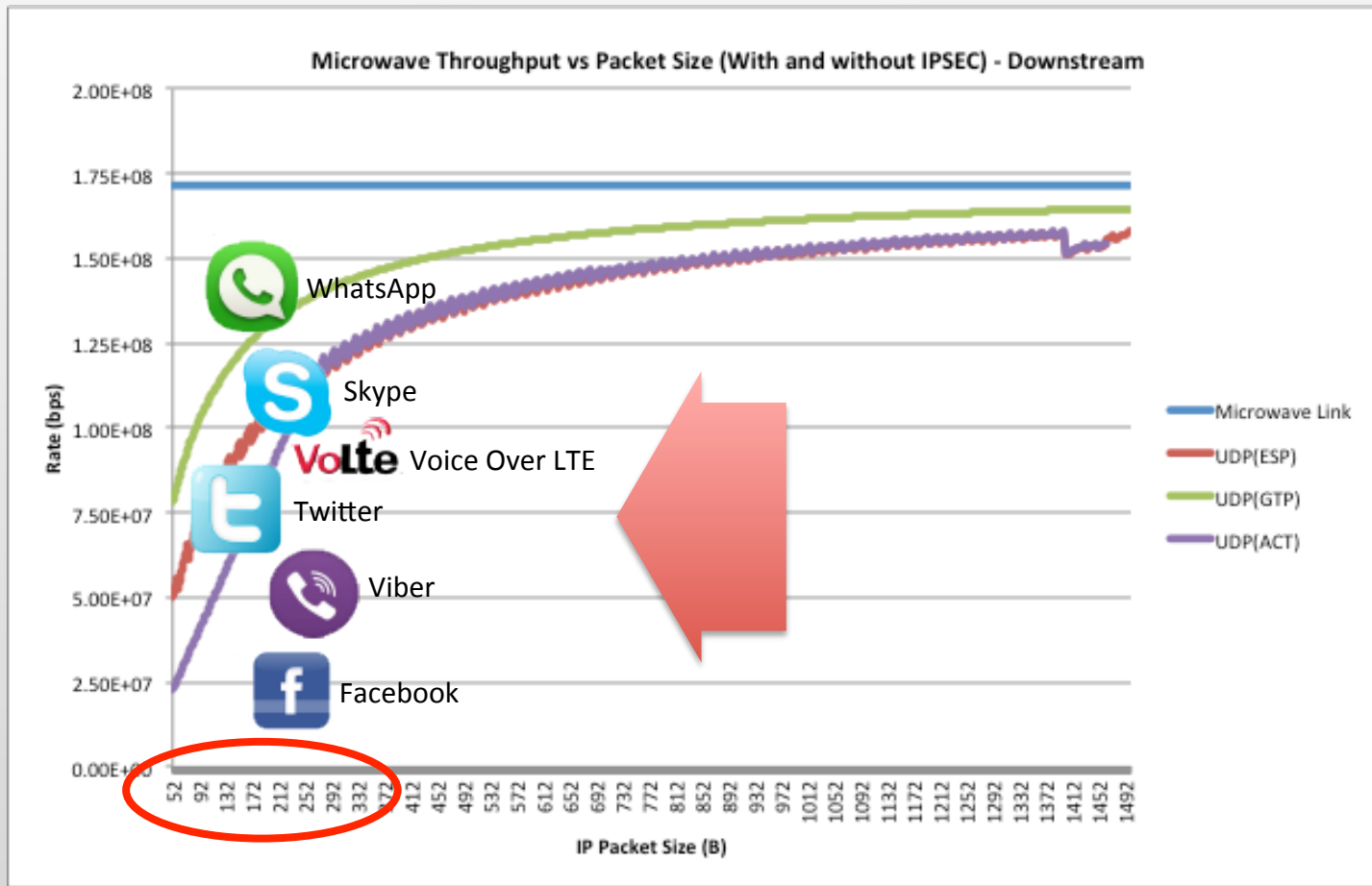
Downstream load heavily impacts upstream latency (Air Interface)

Downstream load heavily impacts upstream latency (SPGW)



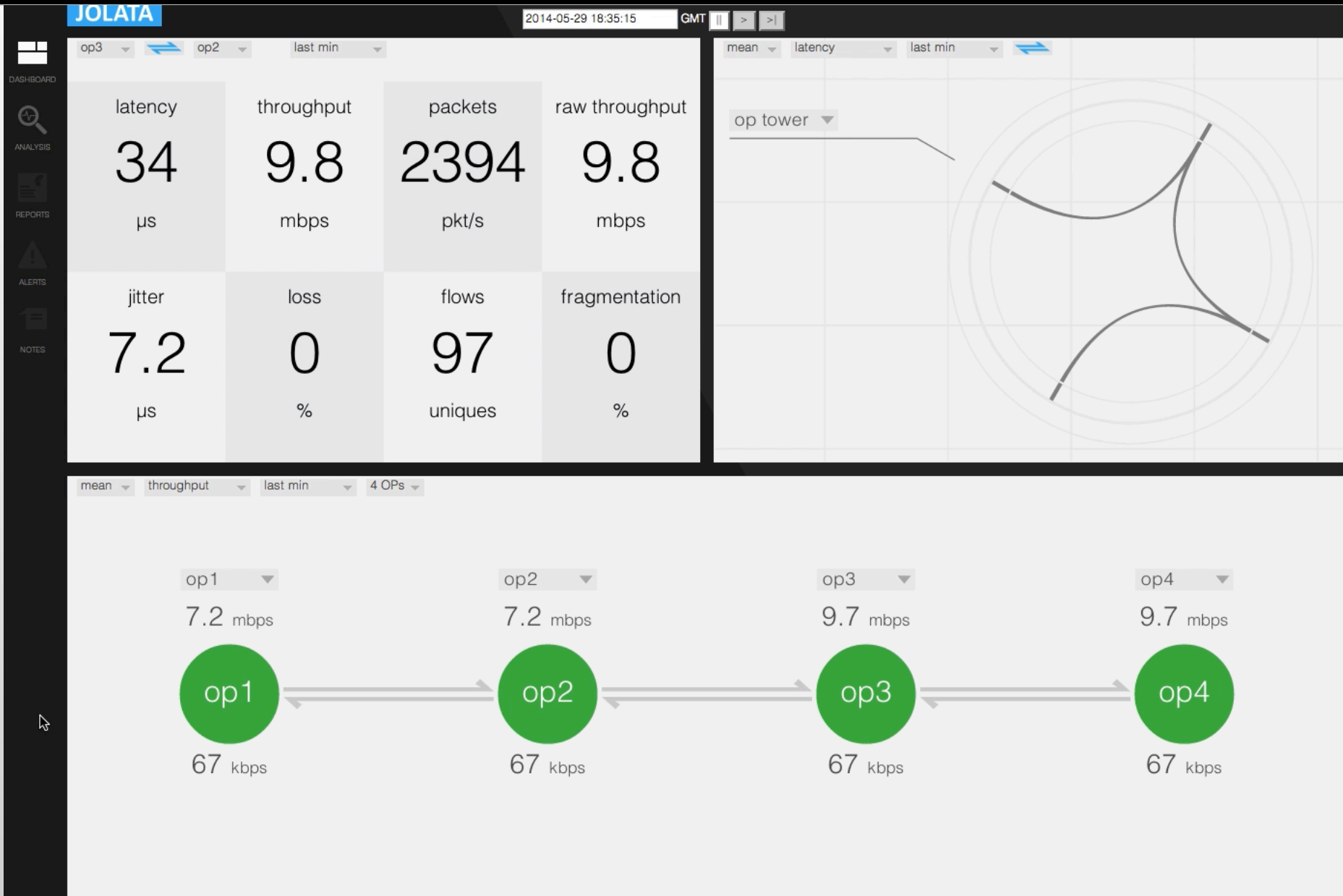
Precise, Actionable Latency Statistics in Real-Time to pinpoint Root Cause

# Microwave Link Throughput Limits



- Small packet size devastates microwave transmissions, and ...
- Most new services and applications are small packets (M2M, VoLTE, Skype, WhatsApp, Viber, Line, etc.)

# Real Time Demo



- Provide **Vendor-neutral solution** that can independently verify all vendor equipment performance
- Measure **EVERY packet and flow on any locations** on the network to provide the most precise intelligence
- Compute **metrics at different time resolutions** depending on the use cases, including 1ms, 10ms, 100ms, 1 sec, 1 min and 1 hour
- Analyze and alert/visualize **within 5 seconds of data capture**, thus providing a real-time view of network performance, and enabling operators to react and fix issues immediately

Thank you

Charles Barry  
charles@jolata.com